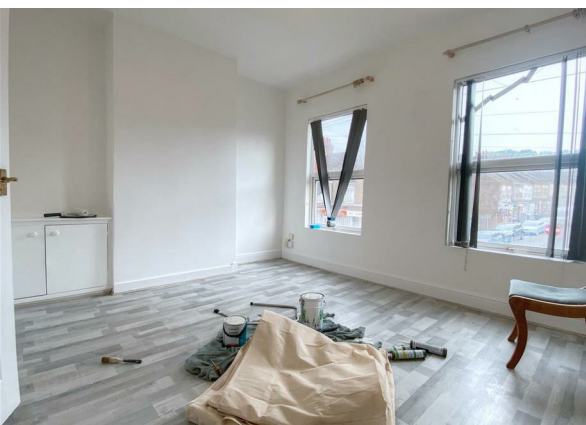
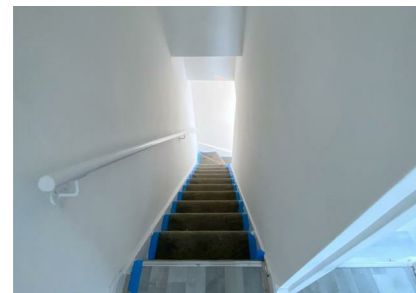


Dallow Road, Luton, LU1 1LY  
£1,250 Per Month  
Council Tax Band: A



Discover this generously sized two-level maisonette situated to the rear of a parade of shops on Dallow Road. This unique property offers an abundance of space and character, ideal for small families or professionals seeking comfort and convenience.

- Ground Floor:
- Welcoming reception/dining room perfect for entertaining or relaxing
  - Fitted kitchen
  - Well-appointed bathroom

- First Floor:
- Large living room offering flexible space for lounging or working
  - Spacious landing area
  - Two bright and comfortable bedrooms

- Outside:
- Private garden providing outdoor space for leisure or gardening

Conveniently located with local amenities on your doorstep and excellent transport links nearby, this maisonette blends practicality with charm.

Don't miss out on this fantastic opportunity to rent a property in such a prime location. Viewings are highly recommended - call today to book a viewing! Lines open 24 hours



Open House Luton



Energy Efficiency Rating		
	Current	Potential
Very energy efficient - lower running costs		
(92 plus) A		86
(81-91) B		
(69-80) C		
(55-68) D		
(39-54) E		
(21-38) F	43	
(1-20) G		
Not energy efficient - higher running costs		
England & Wales		EU Directive 2002/91/EC 